

Directions to Port Huron High School/Memorial Stadium

Busses/Bands

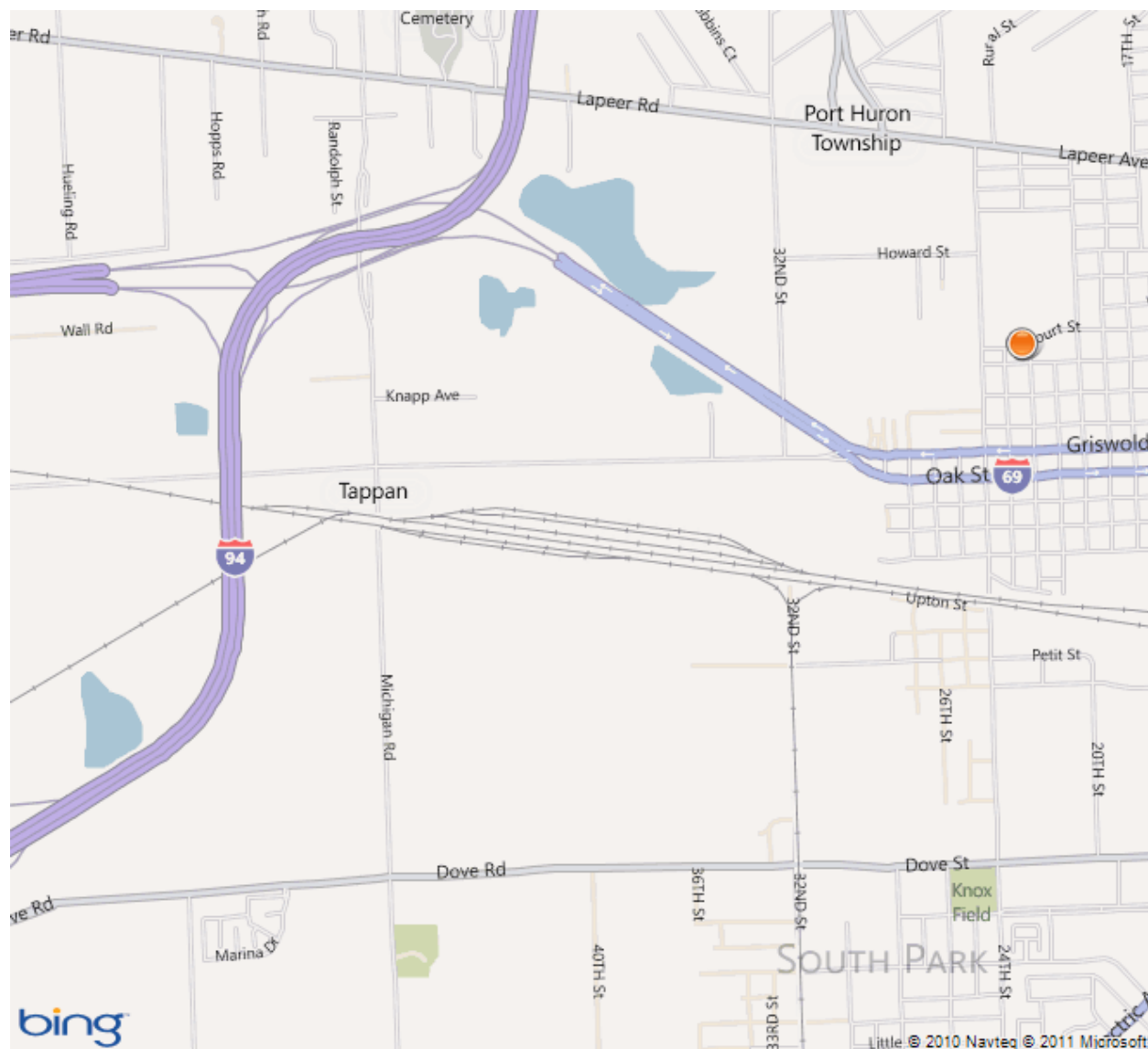
- I-94 to Exit #271 (I-69 Business East – Port Huron)
- Go through 2nd intersection, 24th street (there is a Wendy's on the corner)
- Turn left on 22nd Street (2 blocks PAST 24th)
- 22nd will dump directly into parking lot. Parents will guide you from here

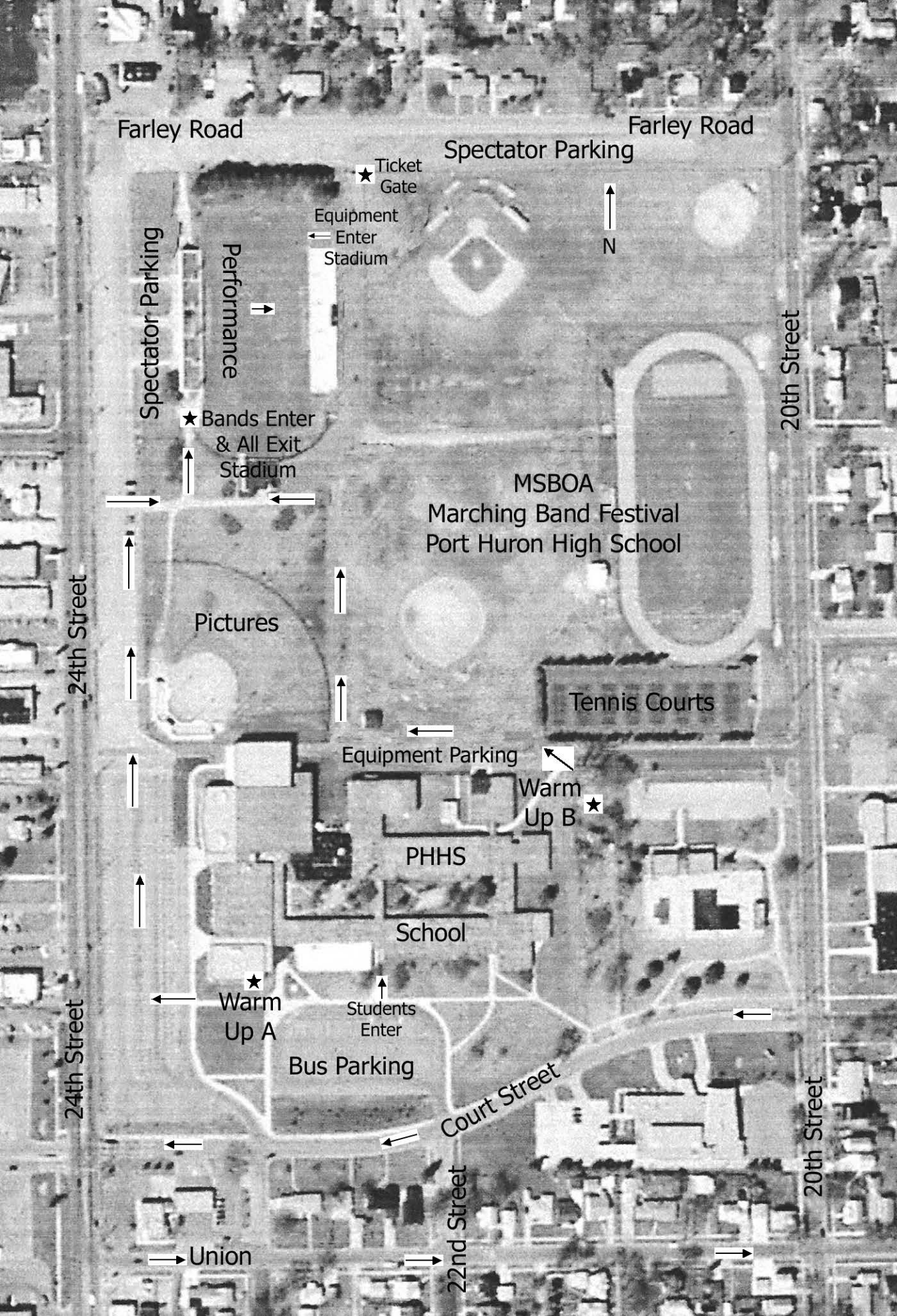
Equipment Vehicles

- I-94 to Exit #271 (I-69 Business East – Port Huron)
- Go through 2nd intersection, 24th street (there is a Wendy's on the corner)
- Turn left on 20th Street (4 blocks PAST 24th)
- Turn left at first driveway PAST Court Street (1 way street). The driveway is between a swimming pool and tennis courts.
- Parents will guide you from here

Parents/Spectators

- I-94 to Exit #271 (I-69 Business East – Port Huron)
- Turn left at 2nd intersection, 24th street (there is a Wendy's on the corner).
- Stadium is past the school on the right hand side of road. Parking is along the stadium and along Farley Street. Entrance will be off Farley Street.
- Grandstands will be on the far side from the parking lot.





Farley Road

Farley Road

Spectator Parking

★ Ticket Gate

Equipment
← Enter Stadium

↑
N

Spectator Parking

Performance
→

★ Bands Enter & All Exit Stadium
↑

MSBOA
Marching Band Festival
Port Huron High School

20th Street

Pictures
↑

Tennis Courts

Equipment Parking
←

Warm Up B
★

24th Street

PHHS

School

★ Warm Up A
←

Students Enter
↑

Bus Parking

Court Street

24th Street

20th Street

→ Union

22nd Street

→